

# EasyLog USB-TP-LCD

-40°C to +125°C temperature logger with external probe



## DESCRIPTION

This standalone data logger measures and stores more than 32.000 temperature readings over a -40°C to +125°C range with a resolution of 0.1°C

The user can easily set up the logger and view downloaded data by plugging the data logger into a PC's USB port and using a free. Data can then be graphed, printed and exported to other applications for detailed analysis.

The high contrast LCD can show a variety of temperature information. At the touch of a button, the user can cycle between the current, maximum and minimum stored values for temperature.

The logger is protected against ingress from water and dust to IP67 standard when the cap is fitted.

It's available a part number that conforms with EN12830 and 21CFR.

## SPECIFICATIONS

Measurement range	-40 to +125°C
Accuracy	USB-TP: $\pm 0.6^{\circ}\text{C}$ USB-TP+ $\pm 0.3^{\circ}\text{C}$
Resolution (display)	0.5°C
Resolution (data Logger)	0.1°C
Sample rate	1 second & 12 hours
Start delay	Through START button or with programmed date/time
Operating temperature	-35°C to +80°C
Readings	32,510
Dimensions [mm]	135 x 24 x 21

## APPLICATIONS

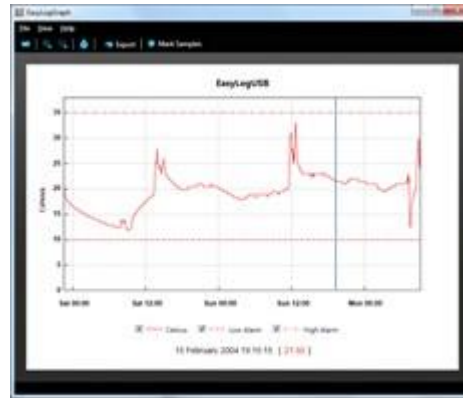
- HACCP systems
- Fresh products' shipping
- Process analysis
- Pharmaceutical industry
- Biological testing
- Thermal mapping

## FEATURES AND BENEFITS

- Supplied with a type 2 thermistor probe
- EL-USB-TP+ supplied with a type A thermistor probe
- Model with LCD
- Operating temperature: -35°C to +80°C
- Memory for up to 32.000 readings
- EN12830 and 21CFR compliant (optional)

## AVAILABLE MODELS

Easylog USB-TP	150.520.00107
Easylog USB-TP+	150.520.00106
EasyLog EL-21CFR-TP-LCD	150.520.00233
EasyLog USB-TP-LCD+-21CFR	150.520.00234



## EASYLOG SOFTWARE

EasyLog software is available as a free download. Easy to install and use, the control software is compatible with 32-bit and 64-bit versions of Windows 7, 8 and 10. The software is used to set up the logger, download, graph and annotate data or export in Excel, PDF and jpeg formats.

## ACCESSORIES

- Mounting bracket
- Protective meatal case

For more information about the EasyLog USB-TP-LCD, visit

[www.eclo.solutions/EL-USB-TP](http://www.eclo.solutions/EL-USB-TP)