

EasyLog USB-2

-35°C to +80°C / 0 to 100% temperature and humidity logger



DESCRIPTION

This standalone data logger measures and stores more than 16,000 temperature readings over a -35 to +80°C and 0 to 100%RH range at a resolution of 0.5°

The user can easily set up the logger and view downloaded data by plugging the data logger into a PC's USB port and using a free. Data can then be graphed, printed and exported to other applications for detailed analysis.

The high contrast LCD (available on some models) can show a variety of temperature information. At the touch of a button (available on some models), the user can cycle between the current, maximum and minimum stored values for temperature.

The logger is protected against ingress from water and dust to IP67 standard when the cap is fitted.

SPECIFICATIONS

Temperature range/ humidity range	-35 to +80°C / 0 to 100%
Memory Capacity	Up to 16,378 samples
Sample Rate	User selectable between 10 seconds & 12 hours
Temperature resolution	-35 to +80°C
Humidity resolution	0.5%RH
Temperature accuracy	0.5°C
Humidity accuracy	2.25%RH t
Start delay	Through START button or with programmed date/time
Battery	BAT 3V6 1/2AA
Battery life	2 years (at 25°C and 1 minute logging rate, LCD on)
Dimensions [mm]	120 x 25 x 22
Accuracy (overall error)	1.7°C typical (-35 to 80°C, 40 to 100%RH)

APPLICATIONS

- HACCP systems
- Fresh Products' shipping
- Process analysis
- Pharmaceutical industry
- Biological testing
- Thermal mapping

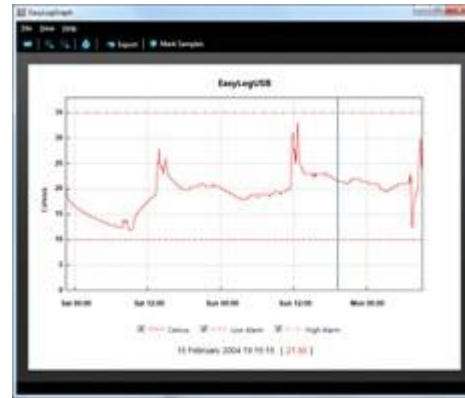
FEATURES AND BENEFITS

- Temperature and humidity data logger
- Optional model with LCD
- Temperature range from: -35°C to +80°C
- Humidity range from: 0 to 100%
- Start button (on LCD model)
- Memory for up to 16.000 readings
- Environmental protection to IP67

AVAILABLE MODELS

Easylog USB-2 150.520.00200

Easylog USB-2-
LCD 150.520.00210



EASYLOG SOFTWARE

EasyLog software is available as a free download. Easy to install and use, the control software is compatible with 32-bit and 64-bit versions of Windows 7, 8 and 10. The software is used to set up the logger, download, graph and annotate data or export in Excel, PDF and jpeg formats.

ACCESSORIES

- Protective metal case
- Mounting Bracket

For more information about the EasyLog USB-2, visit

www.eclo.solutions/EL-USB2